

TEST REPORT

Applicant: SHENZHEN AKS TECHNOLOGY CO., LTD.
Address: Room 805, Longnian Building, 29 Longcheng Avenue, Longgang Street,
Longgang District, Shenzhen

The following sample(s) was/were submitted and identified on behalf of the client as:

HX Job No.: HX2004025350
Product name: Shockaction impact label
Model(S) 25G, 37G, 50G, 75G, 100G
Trademark: shockaction
Sample Received Date: 2020-04-20
Testing Period: 2020-04-20 to 2020-04-24
Test Requested: Selected test(s) as requested by client.
Test Method : Please refer to next page(s).
Test Results : Please refer to next page(s).

Conclusion : Based on the performed tests on submitted sample(s), the results of Lead, Mercury, Cadmium, Hexavalent chromium, Polybrominated biphenyls (PBBs), Polybrominated diphenyl ethers (PBDEs), Phthalates(DBP, BBP, DEHP,DIBP) comply with the limits as set by RoHS Directive (EU)2015/863 amending Annex II to Directive 2011/65/EU.

Tim Chen

Test/Witness Engineer



Approved & Authorized



Test Result:

Test Part Description

Product name	Description
Shockaction impact label	01 Adhesive sticker
	02 ABS
	03 Glass

Remarks

- (1) 1 mg/kg = 1 ppm = 0.0001%
- (2) MDL = Method Detection Limit
- (3) ND = Not Detected (< MDL)
- (4) "-" = Not Regulated

RoHS Directive 2011/65/EU .

Test Method :

- (1) With reference to IEC 62321-5: 2013, determination of Lead by ICP-OES.
- (2) With reference to IEC 62321-5: 2013, determination of Cadmium by ICP-OES.
- (3) With reference to IEC 62321-4: 2013, determination of Mercury by ICP-OES.
- (4) With reference to IEC 62321-7-2: 2017 and/ or determination of Total Chromium by IEC 62321-5: 2013 Colorimetric Method using UV-Vis.
- (5) With reference to IEC 62321-6: 2015, determination of PBBs and PBDEs by GC-MS.

Test Items	Results			MDL	Limit
	01	02	03		
Lead (Pb)	N.D.			10mg/Kg	1000mg/Kg
Cadmium (Cd)	N.D.			10mg/Kg	100mg/Kg
Mercury (Hg)	N.D.			10mg/Kg	1000mg/Kg
Hexavalent Chromium (CrVI)	N.D.			10mg/Kg	1000mg/Kg

Test Items	Results			MDL	Limit
	01	02	03		
Sum of PBBs					
Monobromobiphenyl	N.D.			50mg/Kg	1000mg/Kg
Dibromobiphenyl	N.D.			50mg/Kg	
Tribromobiphenyl	N.D.			50mg/Kg	
Tetrabromobiphenyl	N.D.			50mg/Kg	
Pentabromobiphenyl	N.D.			50mg/Kg	
Hexabromobiphenyl	N.D.			50mg/Kg	
Heptabromobiphenyl	N.D.			50mg/Kg	
Octabromobiphenyl	N.D.			50mg/Kg	
Nonabromobiphenyl	N.D.			50mg/Kg	
Decabromobiphenyl	N.D.			50mg/Kg	
Sum of PBDEs					
Monobromodiphenyl ether	N.D.			50mg/Kg	1000mg/Kg
Dibromodiphenyl ether	N.D.			50mg/Kg	
Tribromodiphenyl ether	N.D.			50mg/Kg	
Tetrabromodiphenyl ether	N.D.			50mg/Kg	
Pentabromodiphenyl ether	N.D.			50mg/Kg	
Hexabromodiphenyl ether	N.D.			50mg/Kg	
Heptabromodiphenyl ether	N.D.			50mg/Kg	
Octabromodiphenyl ether	N.D.			50mg/Kg	
Nonabromodiphenyl ether	N.D.			50mg/Kg	
Decabromodiphenyl ether	N.D.			50mg/Kg	

Notes:

(1) The maximum permissible limit is quoted from the directive 2011/65/EU, Annex II.

Phthalate

Test Method : Determination of phthalates by GC-MS based on IEC 62321-8: 2017.

Test Items	Results			MDL	Limit
	01	02	03		
Dibutyl Phthalate (DBP) CAS#: 84-74-2	N.D.			50mg/Kg	1000mg/Kg
Benzylbutyl Phthalate (BBP) CAS#: 85-68-7	N.D.			50mg/Kg	1000mg/Kg
Bis(2-ethylhexyl) Phthalate (DEHP) CAS#: 117-81-7	N.D.			50mg/Kg	1000mg/Kg
Diisobutyl Phthalate (DIBP) CAS#: 84-69-5	N.D.			50mg/Kg	1000mg/Kg

Notes :

The maximum permissible limit is quoted from ROHS Directive (EU)2015/863. IEC62321 series is equivalent to EN62321 series :

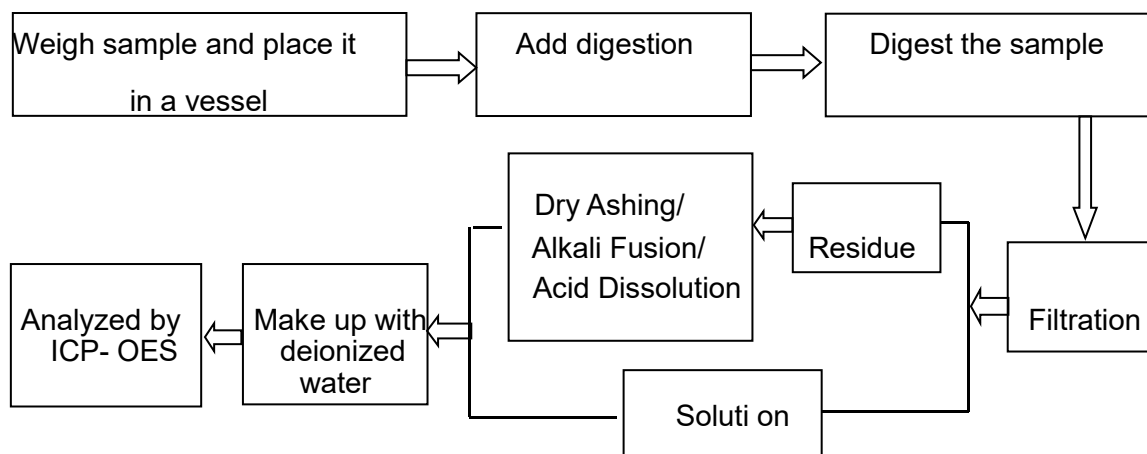
(1) Bis (2-ethylhexyl) phthalate (DEHP), Butyl benzyl phthalate (BBP), and Dibutyl phthalate (DBP) are considered as a priority for risk evaluation and substance restriction.

(2) Bis (2-ethylhexyl) phthalate (DEHP), Butyl benzyl phthalate (BBP), Dibutyl phthalate (DBP) and Diisobutyl Phthalates (DIBP) have been adopted in the draft of Commission Delegated Directive amending Annex II to Directive 2011/65/EU of the European Parliament, and the regulatory limit of each restricted substances should be 0.1%.

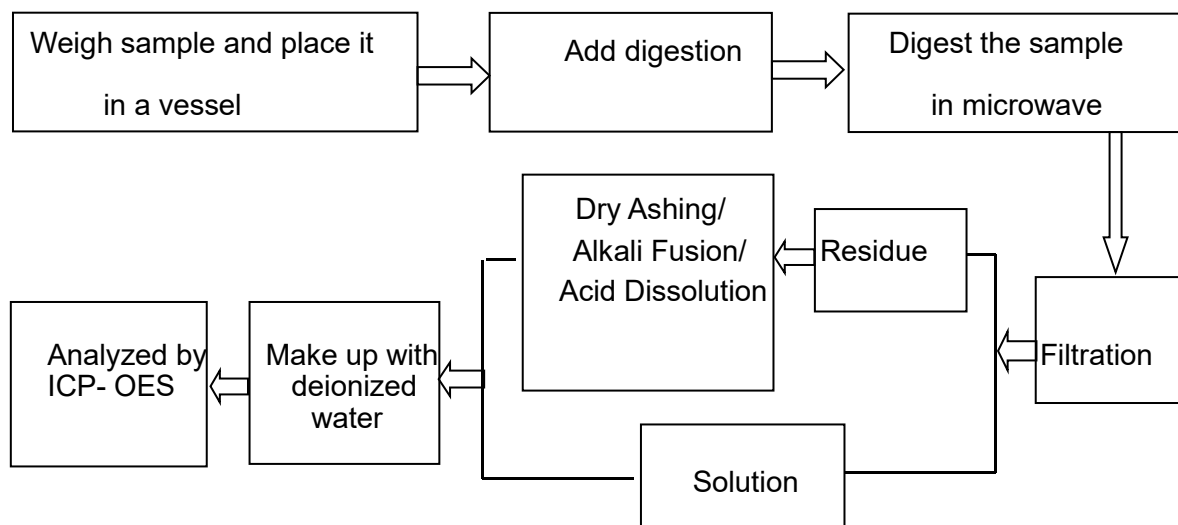
ATTACHMENTS

RoHS Testing Flow Chart

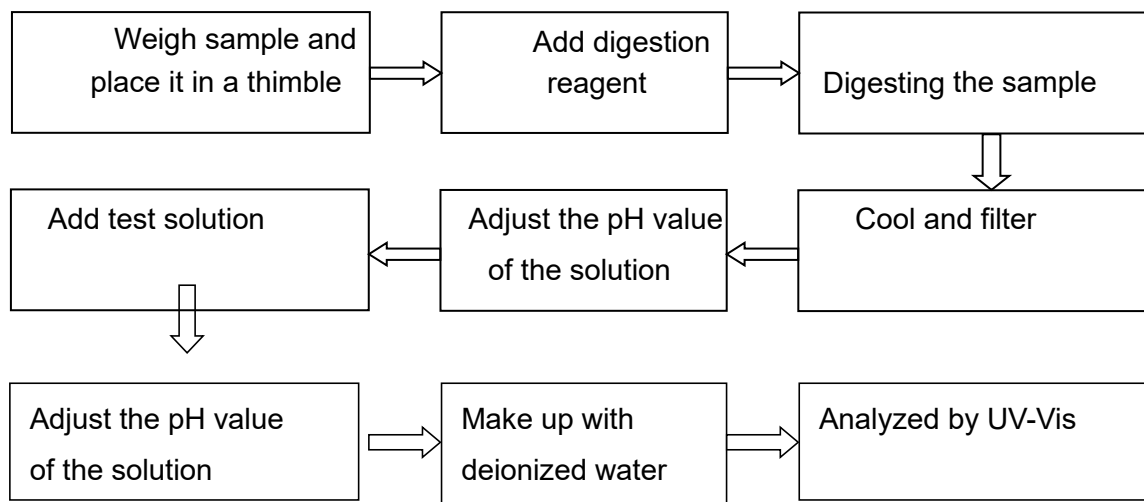
1. Test for Cd/Pb Content



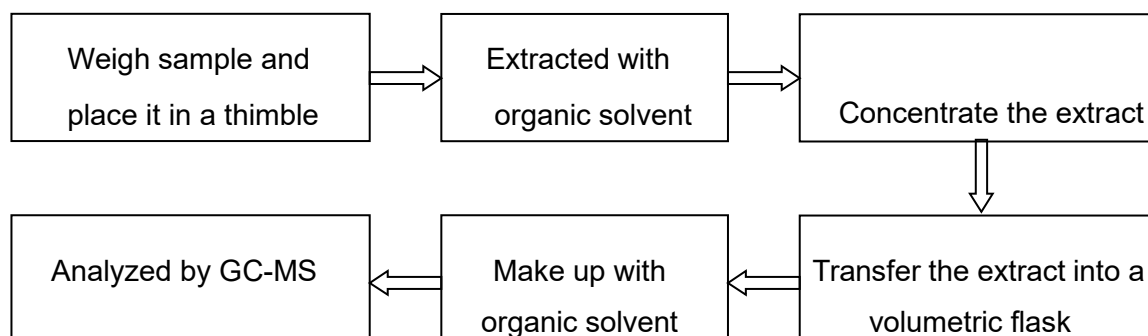
2. Test for Hg Content



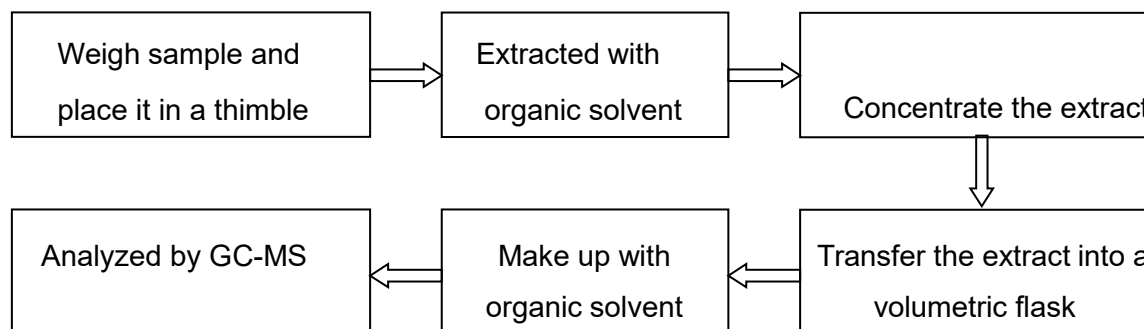
3. Test for Chromium (VI) Content Nonmetallic material



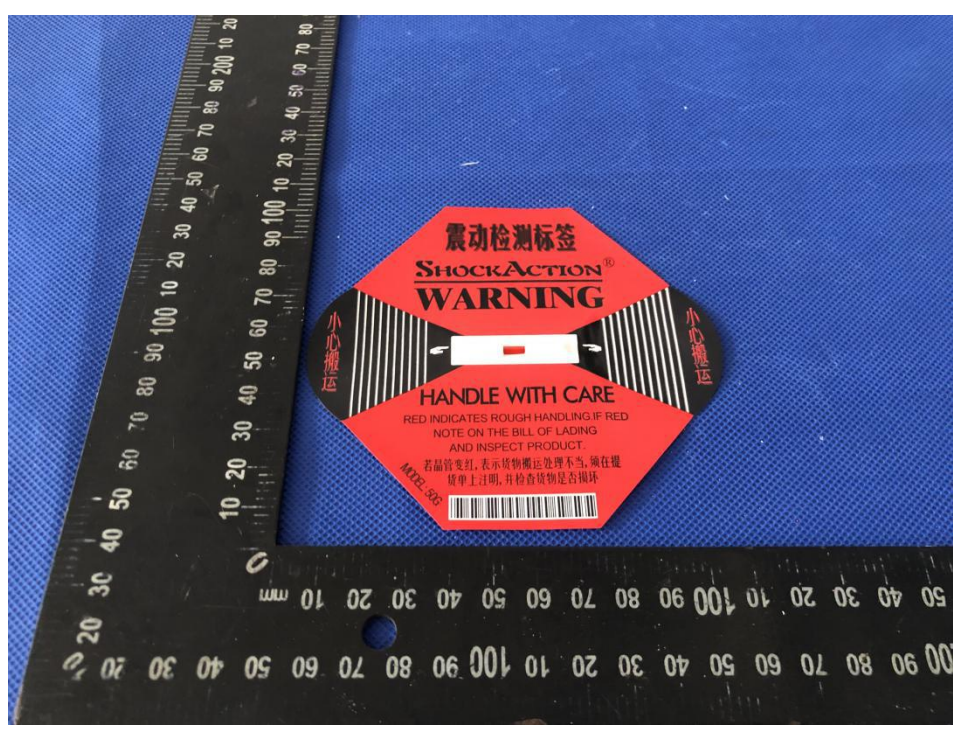
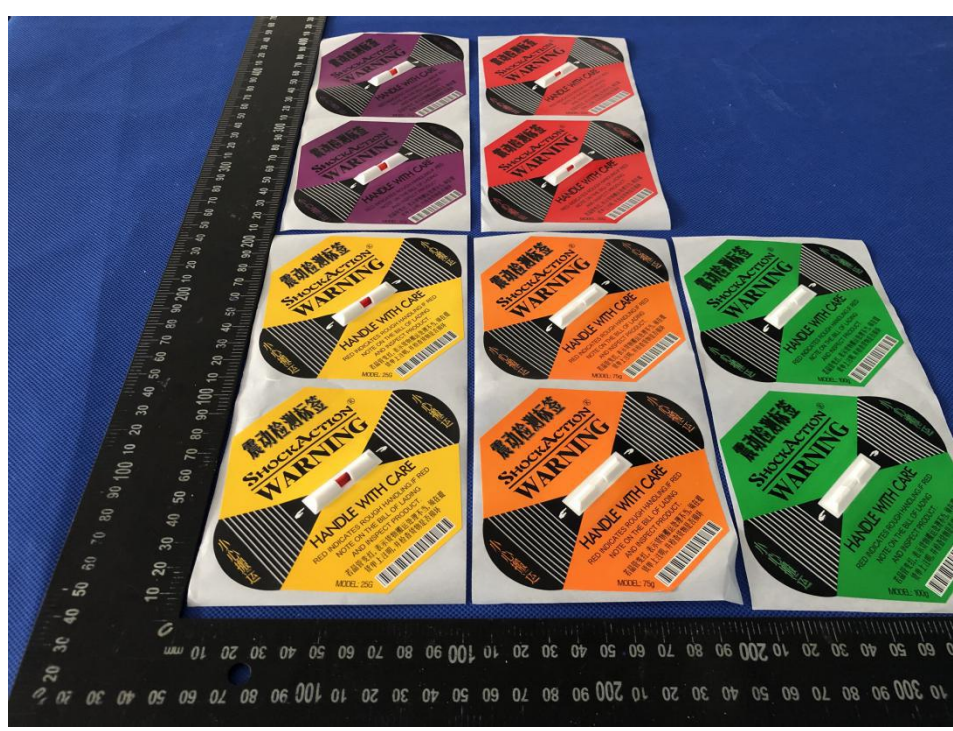
4. Test for Polybrominated Biphenyls (PBBs), Polybrominated Diphenyl Ethers (PBDEs)



5. Test for DBP, BBP, DEHP, DIBP Content



Sample photo:



End of report